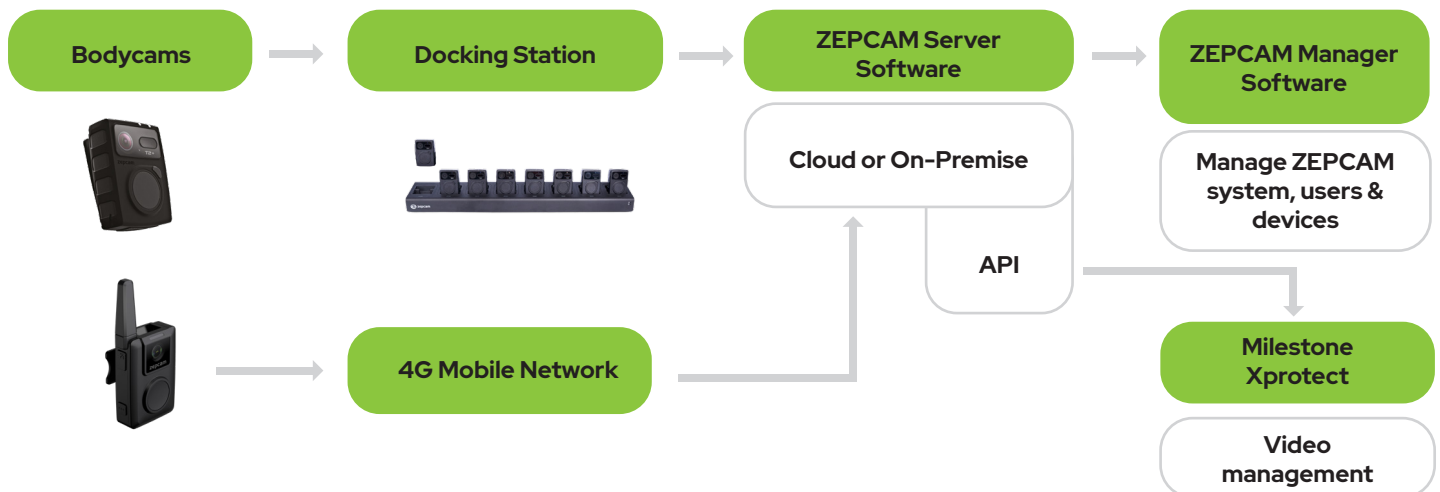


# ZEPCAM Integration Solution: Milestone Xprotect



◆ milestone | XProtect®

ZEPCAM bodycam solutions can now be integrated with Milestone Xprotect. The solution makes viewing livestreams and accessing recordings possible within the Milestone Xprotect video management system. Improve situational awareness and enrich your Milestone XProtect experience with frontline bodycam livestreams from ZEPCAM. Create efficient and easy workflows, to combine video evidence alongside metadata from ZEPCAM bodycams with other sources.



## Key Features

- ✓ View and manage ZEPCAM bodycam livestreams and recordings with metadata\* in Milestone Xprotect
- ✓ Easy to integrate and use, with end-to-end security
- ✓ Manual or automatic rule-based retrieval of ZEPCAM bodycam footage
- ✓ Seamless integration and operation of ZEPCAM bodycams with Milestone Xprotect

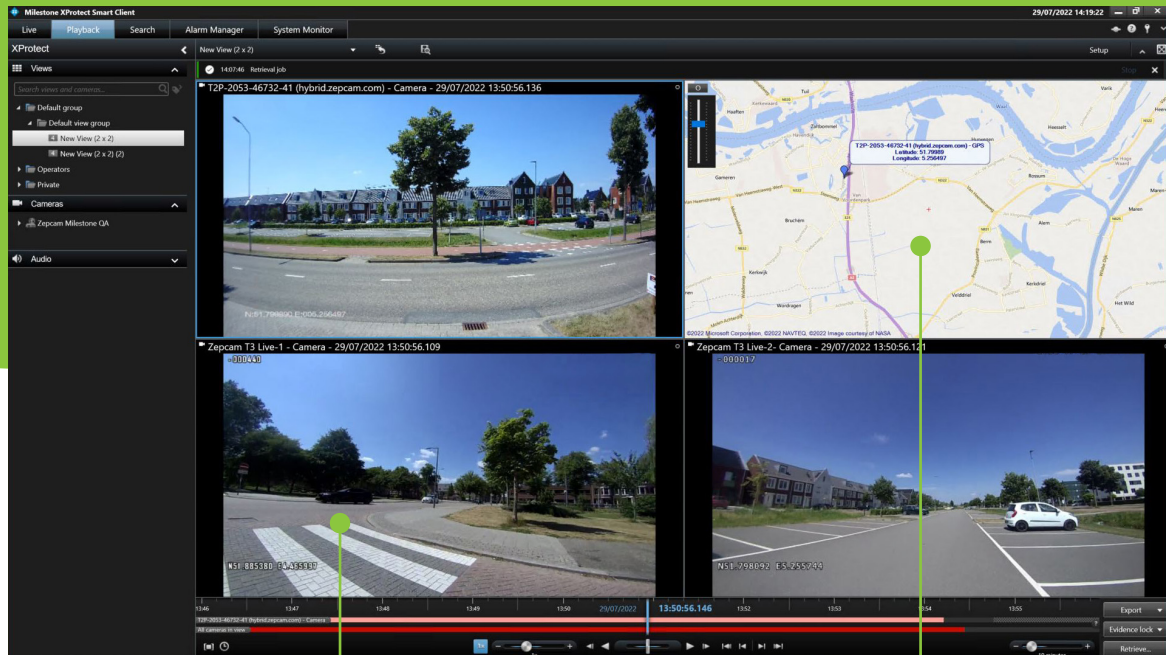
\*Metadata includes GPS, User ID, date and time

Supports the work of  
frontline professionals in:



# How it works

1. Install the ZEPCAM Driver within Milestone XProtect
2. Integrate and configure ZEPCAM Manager software with Milestone XProtect
3. View live video and audio footage from ZEPCAM bodycams directly within Milestone Xprotect
4. Automatically or manually retrieve ZEPCAM bodycam video evidence and metadata within Milestone XProtect
5. Search and replay of bodycam footage including geographical (GPS) search and map view
6. Incident analysis of fixed camera and bodycam footage concurrently



**Direct livestream of the T3 Live within Milestone Xprotect**

**Bodycam GPS location displayed on the map (synchronised with footage)**

## Solution elements:

- ZEPCAM bodycam system: bodycams (T3 Live, T2+ bodycam), docking stations and software (Cloud or On-Premise)
- Milestone XProtect
- ZEPCAM Driver for installation at Milestone XProtect

For more information on the ZEPCAM bodycam solutions visit: [www.zepcam.com](http://www.zepcam.com)